

THE COMPLETE HEALTH SOLUTIONS

**MEDICAL EQUIPMENT
MANUFACTURER,
IMPORTER & SUPPLIER**



CSSD INDIA

THE COMPLETE HEALTH SOLUTIONS



CSSDINDIA.IN



Medical Furniture

OUR OFFERINGS



CIF 2001

FULLY AUTOMATIC ICU BED

Overall Approx Size : 2220 MM L X 980 MM W X 500 MM HT

Approx. Mattress Size : 1900 MM L X 800 MM W

Backrest is operated by a collapsible fixed handle, Detachable Polymer Molded Head and Foot panel, 125mm Dia non-rusting castor two with Brakes and two without Brakes, Corner Buffer at four sides, and Four-side IV pole location with one Powder coated Telescopic IV Pole. The Bed Frame is made from 60mm X 30mm of 16G ERW tubes, a Two-section M.S. top made of 18G CRCA sheet, Finish pre-treated in 11 hot tank processes, and epoxy powder coated, Broken White Paint.

ELECTRIC ICU BED

Advance Liner actuator system with IP54 Liquid splash protection (04 pcs. Motor, 01 pcs. Control box, 01 pcs. Handset, 01 pcs. Battery) , PP Head and Foot Panels along with lock and corner buffer. PP Moulded Four Pieces of individual Side Rails With Inbuilt Bed Angle Indicator (Outer side as well as Inner side). Framework made-up of M.S. Tubes. 4 Section Platform Top made-up of Oval Perforated CRCA M.S. Sheet. Bed Mounted on 125mm (5") Central Locking Twin Wheel Castors along with Directional Lock. S. Telescopic I.V. Rod with 4 Hooks and Provision at 4 Locations. Urine Bag Holder on Both Sides. Calf Elevation Manually Operated. Battery Backup. Positions Obtained/Functions by Patient Hand Remote: Backrest, Knee Rest, Trendelenburg & Reverse Trendelenburg, Hi-Low, Auto-Contour. Finish: Pre-treated & Epoxy Powder Coated.



CIF 2002



CIF 2003

FIVE KEY FIX - ICU BED

Mechanically operated height adjustable ICU /ICU bed, Uniformly perforated for sectional CRCA seat top. Trolley-type base and main frame made of strong rectangular steel tubes. Supplied with detachable full-length collapsible telescopic S.S. safety rails. One S.S IV rod, four revolving corner buffers pretreated epoxy-coated finish

THREE KEY FIX - HT FOWLER BED OPTION WITH LAMINATED PANELS [6000]

Advance Liner actuator system with IP54 Liquid splash protection (04 pcs. Motor, 01 pcs. Control box, 01 pcs. Handset, 01 pcs. Battery) , PP Head and Foot Panels along with lock and corner buffer. PP Moulded Four Pieces of individual Side Rails With Inbuilt Bed Angle Indicator (Outer side as well as Inner side). Framework made-up of M.S. Tubes. 4 Section Platform Top made-up of Oval Perforated CRCA M.S. Sheet. Bed Mounted on 125mm (5") Central Locking Twin Wheel Castors along with Directional Lock. S. Telescopic I.V. Rod with 4 Hooks and Provision at 4 Locations. Urine Bag Holder on Both Sides. Calf Elevation Manually Operated. Battery Backup. Positions Obtained/Functions by Patient Hand Remote: Backrest, Knee Rest, Trendelenburg & Reverse Trendelenburg, Hi-Low, Auto-Contour. Finish: Pre-treated & Epoxy Powder Coated.



CIF 2004



TWO KEY FIX - HT FOWLER BED OPTION WITH LAMINATED PANELS [6000]

Overall Approx Size: 1910 MM L X 910 MM W X 610 MM HT

Approx. Mattress Size: 1900 MM L X 800 MM W

Two functions are manually operated by fixing the collapsible handle. Detachable Head and Foot panel made from Plywood material. Legs fitted with Superior quality PVC shoes. Four side IV pole location. The Bed Frame is made from 60mm X 30mm of 16G ERW tubes. Four section M S top made of 18G CRCA sheet. Finish pre-treated in 11 tanks hot process and epoxy powder coated, Broken White paint.

CIF 2005

TWO KEY ICU BED WITH STEEL RAILING AND WHEEL IN MS POWDER COATING

The ICU bed with steel railing and wheels is an essential piece of medical furniture in any hospital. It provides patients with a comfortable and safe place to recover, while also allowing healthcare professionals to easily move and adjust the bed as needed. The steel railing provides added security and the wheels make it easy to transport the bed from one location to another.



CIF 2006



SINGLE KEY FIX - HT FOWLER BED OPTION WITH LAMINATED PANELS [6000]

Overall Approx Size: 1910 MM L X 910 MM W X 610 MM HT

Approx. Mattress Size : 1900 MM L X 800 MM W

Two functions are manually operated by fixing the collapsible handle. Detachable Head and Foot panel made from Plywood material. Legs fitted with Superior quality PVC shoes. Four side IV pole location. The Bed Frame is made from 60mm X 30mm of 16G ERW tubes. Four section M S top made of 18G CRCA sheet. Finish pre-treated in 11 tanks hot process and epoxy powder coated, Broken White paint.

CIF 2007

STAINLESS STEEL ADJUSTABLE GYNAE TABLE

A gynae table made of stainless steel is a piece of medical furniture that is designed for gynecological examinations and procedures. The table is typically constructed with a sturdy stainless steel frame and a padded surface that is covered with a durable, easy-to-clean material such as vinyl or leatherette. The table is specifically designed to provide a comfortable and safe platform for gynecological examinations and procedures. It typically features adjustable height and tilt, allowing medical professionals to position the patient in the most comfortable and optimal position for the examination or procedure.



CIF 2008



STAINLESS STEEL ATTENDANT BED

A stainless steel attendant bed is a type of medical furniture designed to provide a comfortable and safe sleeping platform for patients who require assistance or supervision from a caregiver. The bed is typically made of stainless steel, a durable and easy-to-clean material that is well-suited for use in medical settings. The attendant bed may feature adjustable height and headrest, allowing medical professionals to position the patient in the most comfortable and safe position. The bed may also include side rails, which can be raised or lowered to prevent the patient from falling out of bed.

CIF 2009



CIF 2010

STAINLESS STEEL STRETCHER

Size: L1220XW580XH770

A stainless steel stretcher is a piece of medical furniture used for transporting patients who may be injured, sick, or incapacitated. It is typically made of durable, high-quality stainless steel, which makes it strong, easy to clean, and resistant to rust and corrosion.

The stretcher usually consists of a flat, padded surface that the patient lies on, with raised sides to prevent them from rolling off during transport. It may also have wheels for easy maneuverability and brakes to keep it stable when not in use.

EXAMINATION COUCH

Size: L1220XW580XH770

An examination couch, also known as a medical examination table, is a piece of furniture commonly found in medical clinics and doctor's offices. It is typically used for physical examinations, diagnostic tests, and minor medical procedures. An examination couch is usually designed with a flat, padded surface that the patient lies on, and is adjustable to different positions depending on the needs of the examination or procedure. It may also have a backrest that can be tilted or raised, and armrests or stirrups for patient comfort and support during the examination.



CIF 2011



CIF 2012

STAINLESS STEEL STOOL

A stainless steel stool is a type of medical furniture commonly used in healthcare settings such as hospitals, clinics, and laboratories. It is made of high-quality stainless steel, which is strong, durable, and resistant to rust and corrosion. Stainless steel stools are designed to provide a comfortable and stable seating option for healthcare professionals during medical procedures or examinations. They are also easy to clean and sanitize, making them an ideal choice for maintaining a sterile environment.

CLOSED DISTRIBUTION TROLLEY SS 304

A size 1080 x 530 x 800 mm H

A Closed distribution trolley made of stainless steel is a type of trolley used in hospitals, clinics, and other medical settings for the transportation and storage of medical supplies, instruments, and equipment. It is designed with closed compartments to ensure that the contents remain clean and free from contamination. The trolley is made of high-quality stainless steel, which is easy to clean and sanitize, making it ideal for use in sterile environments. The closed compartments can be locked to ensure the security of the contents, and the trolley may have wheels for easy maneuverability.



CIF 2013



CIF 2014

SS WORK TABLE WITH 2 SINKS

Size 2400mm L x 650 mm W x 900mm H

A medical furniture work table with 2 sinks made of stainless steel is a specialized table designed for use in medical and healthcare environments. It typically has a flat top surface, which is made of stainless steel to ensure durability and easy cleaning. The table also includes two integrated sinks, which are also made of stainless steel, that allow for easy hand washing and cleaning of medical instruments. This type of work table is commonly used in hospitals, clinics, and other medical facilities where there is a need for frequent hand washing and cleaning of medical equipment.



CIF 2015

SS WORKING TABLE WITH BOTTOM SHELF

Size 1500 x 600 x 900 mmH

A medical furniture working table with a bottom shelf made of stainless steel is a specialized table designed for use in medical and healthcare environments. It typically has a flat top surface, which is made of stainless steel to ensure durability and easy cleaning, and a lower shelf made of the same material. This type of work table is commonly used in hospitals, clinics, and other medical facilities where there is a need for a stable and durable surface to work on. The lower shelf provides additional storage space for medical supplies and equipment, which can be easily accessed by the medical staff.

SS CONTROL AND PACKING TABLE WITH DRAWER

Size 2000 mm L x 1400 mm W x 1400 mm H

A medical furniture control and packing table with a drawer made of stainless steel is a specialized table designed for use in medical and healthcare environments. It is typically used for the packaging and labeling of medical supplies and equipment, and for quality control purposes. The table features a flat top surface made of stainless steel, which is easy to clean and sanitize, and a lower drawer, which provides additional storage space for medical supplies and equipment. The drawer can be locked to ensure the security of the contents, and it can be easily opened and closed for quick access to the items stored within.



CIF 2016



CIF 2017

SS TABLE TROLLEY

Size 1080 x 550 x 800mm

A medical furniture table trolley made of stainless steel is a specialized trolley designed for use in medical and healthcare environments. It is typically used for the transportation and storage of medical supplies, instruments, and equipment. The trolley features a flat top surface made of stainless steel, which is easy to clean and sanitize, and a lower shelf, which provides additional storage space for medical supplies and equipment. The trolley may also include drawers or other compartments for added storage and organization.



CIF 2018

SS CONTROL AND PACKING TABLE WITH 2 SHELVES

Size 2000 x 1500x 900 mm

A medical furniture control and packing table with 2 shelves made of stainless steel is a specialized table designed for use in medical and healthcare environments. It is typically used for the packaging and labeling of medical supplies and equipment, and for quality control purposes. The table features a flat top surface made of stainless steel, which is easy to clean and sanitize, and two lower shelves, which provide additional storage space for medical supplies and equipment. The shelves can be adjusted to different heights to accommodate different items and can be easily accessed by the medical staff.



CIF 2019

SS BASKET TROLLEY

A medical furniture basket trolley made of stainless steel is a specialized trolley designed for use in medical and healthcare environments. It is typically used for the transportation and storage of medical supplies, instruments, and equipment. The trolley features multiple baskets or trays made of stainless steel, which are easy to clean and sanitize, and a lower shelf or cabinet for additional storage space. The trolley may also include wheels or casters for easy maneuverability and transport.



CIF 2020

SS STORAGE CUP BOARD

A medical furniture storage cupboard made of stainless steel is a specialized storage unit designed for use in medical and healthcare environments. It is typically used for the storage of medical supplies, instruments, and equipment. The cupboard features multiple shelves made of stainless steel, which are easy to clean and sanitize, and can be adjusted to different heights to accommodate different items. The doors of the cupboard are also made of stainless steel and can be locked to ensure the security of the stored items.

SS LINEN FOLD TABLE

A medical furniture linen fold table made of stainless steel is a specialized table designed for use in medical and healthcare environments. It is typically used for the storage and organization of linens and other medical textiles. The table features a flat top surface made of stainless steel, which is easy to clean and sanitize, and multiple shelves or compartments for the storage of linens and textiles. The shelves can be adjusted to different heights to accommodate different sizes of linens, and the compartments can be easily accessed by the medical staff.



CIF 2021



CIF 2022

SS LINEN DISTRIBUTION AND STORAGE TROLLEY

A medical furniture linen distribution and storage trolley made of stainless steel is a specialized trolley designed for use in medical and healthcare environments. It is typically used for the transportation, distribution, and storage of linens and other medical textiles. The trolley features multiple shelves or compartments made of stainless steel, which are easy to clean and sanitize, and can be adjusted to different heights to accommodate different sizes of linens. The trolley may also include wheels or casters for easy maneuverability and transport.

SS OT ALMIRAH

Medical furniture like an OT Almirah (operating theater almirah) made of stainless steel is commonly used in hospitals, clinics, and other medical facilities. Stainless steel is a preferred material for medical furniture because it is durable, easy to clean, and resistant to corrosion and staining. An OT almirah is a storage cabinet that is typically used in operating theaters to store surgical instruments, gowns, masks, gloves, and other medical supplies. The stainless steel construction of the almirah makes it easy to keep clean and disinfect, which is important in a sterile environment like an operating theater.



CIF 2023



CIF 2024

JOURNAL PURPOSE TROLLEY

A medical furniture Journal Purpose trolley, also known as a medical record trolley, is a mobile cart designed to store and transport patient medical records and other important documents within a healthcare facility. These trolleys are typically used in hospitals, clinics, and other medical settings where patient records need to be easily accessible and frequently moved from one location to another. The purpose of a Journal Purpose trolley is to provide a convenient and secure storage solution for patient records, ensuring that they can be easily accessed by medical professionals when needed.



CIF 2025

SS DRESSING TROLLEY

A dressing trolley made of stainless steel is a commonly used piece of medical furniture in hospitals, clinics, and other medical facilities. Stainless steel is a preferred material for medical furniture because it is durable, easy to clean, and resistant to corrosion and staining. A dressing trolley is a type of mobile cart that is used to hold medical supplies and equipment, such as dressings, sterile swabs, and instruments. The stainless steel construction of the trolley makes it easy to keep clean and disinfect, which is important for maintaining a sterile environment.

BED SIDE SCREEN WITH CURTAIN

A bed side screen with curtain is a commonly used piece of medical furniture in hospitals, clinics, and other medical facilities. It is used to provide privacy and separation between patients in shared rooms or open ward areas. The screen is usually made of a sturdy metal frame that supports a curtain made of a durable and washable material. The bed side screen is designed to be mobile and easily maneuvered to create a private space for patients as needed. The curtains are typically attached to the frame using hooks or snaps, allowing for easy replacement and cleaning. The frame is often designed to fold for easy storage when not in use.



CIF 2026



CIF 2027

SS UTILITY BOWL

A utility bowl made of stainless steel is a commonly used piece of medical furniture in hospitals, clinics, and other medical facilities. Stainless steel is a preferred material for medical furniture because it is durable, easy to clean, and resistant to corrosion and staining. A utility bowl is a shallow, circular container that is typically used to hold medical instruments or liquids during medical procedures. The stainless steel construction of the bowl makes it easy to keep clean and disinfect, which is important for maintaining a sterile environment.

FEET FOOT OPERATED SCRUBBER S.S. 304

Foot-operated scrubbers are cleaning tools that allow you to scrub floors or other surfaces using your feet to power the scrubbing action. They are often used in commercial settings where floors need to be cleaned frequently and efficiently. Foot-operated scrubbers come in a variety of sizes and materials, including stainless steel. Stainless steel is a popular material for scrubbers because it is durable, corrosion-resistant, and easy to clean. It is also non-reactive, meaning it won't interact with the chemicals or cleaning agents used to clean surfaces.



CIF 2028



CIF 2029

WALL MOUNTED HAND OPERATED SINGLE TAP 2 FEET

A wall-mounted hand-operated single tap is a type of medical furniture commonly used in healthcare settings such as hospitals, clinics, and laboratories. It is designed to provide a controlled water supply for various medical procedures, including hand washing, wound irrigation, and instrument cleaning. The wall-mounted design of the tap allows it to be easily installed and securely attached to the wall, minimizing the risk of accidental dislodgement or damage. The hand-operated control mechanism allows the user to control the flow of water by pressing a lever or button, providing an efficient and hygienic way to access water when needed.



CIF 2030

OVER BED TABLE ADJUSTABLE HEIGHT WITH KNOB ABS TOP

An over bed table with an adjustable height and a knob-secured ABS top is a type of medical furniture commonly used in hospitals, nursing homes, and other healthcare settings. It is designed to provide a convenient and functional surface for patients to eat, drink, read, or work while lying in bed. The table features an adjustable height mechanism that allows the table top to be raised or lowered to a comfortable position for the patient. The mechanism is typically controlled by a knob that can be turned to adjust the height. The ABS top is a durable, lightweight material that is easy to clean and sanitize, making it ideal for use in medical settings.

OVER BED TABLE ADJUSTABLE HEIGHT WITH GEAR ABS TOP

An overbed table with an adjustable height and gear ABS top is a piece of medical furniture designed to provide a surface for patients to use while they are in bed. The table is typically mounted on a wheeled base that can be easily moved and positioned over the patient's bed. The adjustable height feature of the table allows it to be set at a comfortable and ergonomic height for the patient, regardless of their bed height or position. The gear mechanism allows for smooth and easy height adjustments, making it simple for the patient to use.



CIF 2031



CIF 2032

BED SIDE LOCKER IN MS AND TOP IN SS

A bed side locker with a steel frame and stainless steel top is a piece of medical furniture commonly found in hospital and clinical settings. The locker is designed to provide a convenient storage area for patients to keep personal items or medical supplies within easy reach. The frame of the locker is typically made of mild steel, which provides a sturdy and durable base. The mild steel frame is also typically coated with a corrosion-resistant finish to protect against damage from liquids or other substances commonly found in healthcare environments.

SS CRASH CARY TROLLEY

A crash cart or trolley is a type of medical furniture that is used to transport medical equipment, drugs, and supplies to a patient's bedside in emergency situations. It is typically made of stainless steel, which is durable, easy to clean, and resistant to corrosion.

The crash cart is designed to be highly mobile and is equipped with wheels, making it easy for medical staff to quickly move it to where it is needed. It typically has a number of drawers and compartments, which are used to store various medical supplies and equipment, such as defibrillators, oxygen tanks, and emergency medications.



CIF 2033



CIF 2034

STAINLESS STEEL O.T. MAYO'S TROLLEY

A stainless steel O.T. Mayo's Trolley is a type of medical furniture that is commonly used in operating rooms (O.T. stands for "operating theater"). It is a mobile cart designed to hold surgical instruments and supplies, and it is typically made of high-quality stainless steel for easy cleaning and durability. The trolley usually consists of multiple shelves, which are often perforated to allow for air circulation and easy cleaning. The shelves may be adjustable, allowing healthcare professionals to customize the trolley to their specific needs. Some O.T. Mayo's Trolleys also feature additional storage options such as drawers, cabinets, or hooks for hanging surgical instruments.



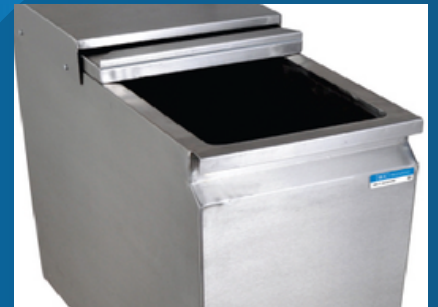
CIF 2035

STAINLESS STEEL SPONGE TROLLEY

A medical furniture stainless steel sponge trolley is a type of trolley that is commonly used in healthcare settings such as hospitals, clinics, and dental practices. It is designed to hold and transport sponges, dressings, and other sterile supplies that are used during medical procedures. The trolley is typically made of stainless steel, which is a durable and hygienic material that is easy to clean and disinfect. It usually has several shelves or trays that are divided into compartments for organizing different types of supplies.

STAINLESS STEEL HOUSE KEEPING TROLLEY

A stainless steel housekeeping trolley is a type of medical furniture that is designed to assist in the organization and transportation of cleaning supplies and equipment within a medical facility. The trolley is typically made from stainless steel, which is durable, easy to clean, and resistant to rust and corrosion. The trolley typically features multiple shelves and compartments, allowing for the storage and transport of cleaning supplies, such as disinfectants, wipes, and cleaning cloths. The trolley may also have hooks or clips for holding brooms, mops, and other cleaning tools.



CIF 2036



CIF 2037

STAINLESS STEEL NICU BABY CARE TROLLEY

A NICU (Neonatal Intensive Care Unit) baby care trolley is a specialized type of medical furniture used to care for premature or critically ill newborn infants in the NICU. The trolley is designed to be mobile, allowing medical staff to move the trolley between different parts of the unit as needed. Stainless steel is a common material used in the construction of medical furniture, including NICU baby care trolleys. Stainless steel is durable, easy to clean and disinfect, and resistant to corrosion and staining. This makes it an ideal material for use in healthcare environments where hygiene and cleanliness are of the utmost importance.

STAINLESS STEEL O.T. MEDICINE ALMIRAH

Stainless steel O.T. medicine almirah is a type of medical furniture that is used in hospitals and medical facilities for storing medicines and medical equipment. The almirah is made of high-quality stainless steel, which makes it durable and long-lasting. The almirah is designed to provide ample storage space for medicines and medical equipment, and it usually comes with multiple shelves and compartments. The shelves are adjustable, which makes it easy to customize the storage space according to the needs of the medical facility.



CIF 2038



CIF 2039

STAINLESS STEEL SEALING & LABELING TABLE

A medical furniture stainless steel sealing and labeling table is a piece of equipment used in the healthcare industry for sealing and labeling medical products, such as vials or syringes. The table is made of stainless steel, which is a durable and easy-to-clean material that can withstand frequent use and exposure to disinfectants. The table is designed with a smooth, flat surface that is free of cracks or crevices where bacteria can accumulate. It also has a raised lip around the edge to prevent spills and leaks from contaminating the surrounding area. The sealing and labeling equipment is typically mounted on the table, along with storage drawers and shelves for supplies.



CIF 2040

STAINLESS STEEL WHEEL CHAIR

A stainless steel wheelchair is a type of medical furniture that is made primarily of stainless steel. It is designed to provide a durable, lightweight and easy-to-clean option for individuals who require mobility assistance. Stainless steel wheelchairs are ideal for use in medical facilities, hospitals, clinics, and even at home. They are known for their strength and durability, making them an excellent choice for individuals with limited mobility who require a reliable and sturdy wheelchair.

STAINLESS STEEL ATTENDANT CHAIR

A stainless steel attendant chair is a type of medical furniture designed to provide a comfortable and safe seating option for healthcare professionals who need to remain close to patients during medical procedures or examinations. These chairs are typically made of high-quality stainless steel, which makes them durable, easy to clean, and resistant to corrosion.



CIF 2041



CIF 2042

STAINLESS STEEL MOUNTING WALL CABINET

A stainless steel mounting wall cabinet for medical use is a type of furniture designed to provide secure storage for medical supplies, equipment, and instruments. These cabinets are typically made of high-grade stainless steel, which is durable, easy to clean, and resistant to corrosion, rust, and bacteria. The wall-mounting feature allows for easy installation in clinical settings, such as hospitals, clinics, and laboratories. Some common features of medical wall cabinets include adjustable shelves, locking doors, and optional glass or acrylic doors for easy visual inspection of contents.

STAINLESS STEEL FOOT STEP

A stainless steel footstep is a type of medical furniture used in healthcare settings such as hospitals, clinics, and medical offices. It is typically designed to provide a stable platform for patients to step onto during medical examinations, procedures, or when accessing higher surfaces such as medical beds or exam tables. The stainless steel material used to make footstep furniture offers several advantages, including durability, ease of cleaning and maintenance, and resistance to corrosion and rust. Additionally, stainless steel is a non-porous material, which means it is less likely to harbor bacteria and other pathogens that can cause infections in clinical settings.



CIF 2043



CIF 2044

STAINLESS STEEL FOOD BED TABLE

Size: L900XW400XH1050

A stainless steel food bed table is a type of medical furniture that is designed to provide a stable and sturdy surface for patients to eat their meals while in bed. These tables are made from high-quality stainless steel, which is a durable and hygienic material that can withstand frequent use and cleaning in healthcare settings. Stainless steel food bed tables typically have adjustable heights, allowing them to be positioned at the right level for the patient's comfort. They may also have features such as built-in cup holders, raised edges to prevent spills, and wheels for easy mobility.



CIF 2045

MEDICINE TROLLEY

A medical furniture medicine trolley is a piece of equipment used in healthcare settings to store and transport medical supplies, instruments, and medications. It typically consists of several shelves or trays, often made of metal or plastic, mounted on wheels for easy mobility. Medicine trolleys can vary in size and design, depending on the intended use and the environment in which they will be used. They may have locking mechanisms to secure medications and other valuable supplies, and some may have built-in power outlets for medical devices that need to be charged.

STAINLESS STEEL IV STAND

A stainless steel IV stand is a piece of medical equipment used in healthcare settings to hold and support intravenous (IV) bags or infusion pumps. It is typically made of high-quality stainless steel, which is durable, easy to clean, and resistant to corrosion and rust. The IV stand is designed with a pole that extends upward from a stable base, usually with wheels for easy movement. At the top of the pole, there is a hook or a series of hooks that can hold IV bags or infusion pumps securely in place. Some IV stands may also have additional hooks or loops to hold other medical equipment, such as oxygen masks or tubing.



CIF 2046



CIE 1050

OT TABLES

An operating table system is basically made up of three components: an operating table column, the table top and the transporter. Modern operating table systems are available as both stationary and mobile units. There are a wide range of table tops that can be used for both general surgery and for specialist disciplines. Mobile operating tables, however, tend to be equipped with a specific discipline in mind. The base, column and table top form a unit.

OT LIGHTS

"OT lights" typically refers to the lights used in an operating theater during surgeries or other medical procedures. These lights are designed to provide bright, clear illumination of the surgical area so that surgeons and other medical personnel can perform their work with precision. OT lights are often mounted on the ceiling or on special equipment carts, and they may feature adjustable heads or other features to allow for optimal positioning during different types of procedures. They may also be designed with special filters or coatings to reduce glare and improve visibility.



CIE 1009



CIE 1008



CIF 2047

ANESTHESIA TROLLEY

An anesthesia trolley is a type of medical furniture that is used to store and transport anesthesia equipment and supplies in a hospital or clinical setting. It is typically a wheeled cart or cabinet that is designed to be portable and easily moved from one location to another. Anesthesia trolleys often feature drawers, shelves, and compartments that are specifically designed to hold and organize various types of anesthesia equipment, such as syringes, needles, masks, and tubing. They may also include built-in power outlets, oxygen tanks, and other essential components needed for anesthesia administration.

CIE 1096



CSSD India

The Complete Health Solutions



Your Business need us

Contact Us



cssdindia.in



+919981799935



info@cssdindia.in



**MIG DX-133, Amaravti colony, Opp.
NRI School Amrai, Baghsewaniya,
Bhopal**



**1003, Loha Bhawan, Opp. Old High
court, Income Tax, Ahmedabad –
380018**



**Social media
Links QR Code**

